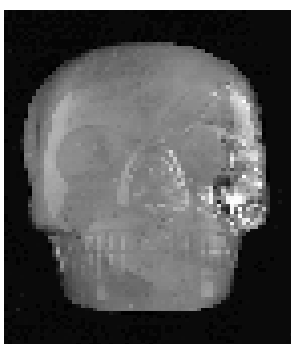




Society for Psi Research and Education

SPRE Special Events Presents JoAnn Parks, Skull Keeper, Speaking on “The Passing of the Skull,” with MAX, THE CRYSTAL SKULL



Date: Friday, January 23, 2009

Time: 7:00pm to 8:30pm

Location: Old Ft. Collins Airport Building,
2200 Airway Ave., Fort Collins, CO 80524

Cost: \$20.00

[Back by Popular Demand, Max the Crystal Skull will be in Fort Collins for a 3rd visit Jan. 23-24 plus a few appointments Jan. 24.](#)

PRIVATE SESSIONS WITH MAX

[Friday, Jan. 23, 1pm to 4:30pm \(4:30pm is last appt.\); Saturday, Jan. 24, 10am to 9pm \(9pm is last appt.\), with a few appointments on Sun.](#)

COST: \$50 for one person for 30 Minutes. (A private session can be shared by 2-5 people for \$35/person). [Contact for private sessions: Maggie Woolridge, maggiewmail@comcast.net , or 970-308-2920. Reservations recommended.](#)

JoAnn Parks will tell us the amazing story of how Norbu Chen passed the skull to her right before his death. Hear how she moved from talking to the “rock” in her closet to being an internationally recognized peace elder, offering healing and consciousness-raising sessions with the skull. Each person will have time to spend with Max.

Max is considered by many, including the British Museum, to be one of the rarest artifacts ever found. Estimated to be at least 10,000 years old, MAX was used by Mayan priests in Guatemala for healing and prayer. The skull was given to Norbu Chen, a powerful healer of the Tibetan sect of Red Hat Lamas. JoAnn says Max is perfectly attuned to the Christ Consciousness and transmits this state as much as possible to people who meditate with him. Many who have been in the presence of crystal skulls have had a range of experiences including receiving instantaneous healing, information, visions of other worlds and the experience of higher states of consciousness and expanded intuitive abilities. To this day, Max is used as a tool for awakening consciousness and accelerating healing and growth on all levels.

For more information please visit the Society for Psi Research and Education (SPRE) web site: www.spre.org, call 970-225-3753 or contact lucieblanchard@comcast.net